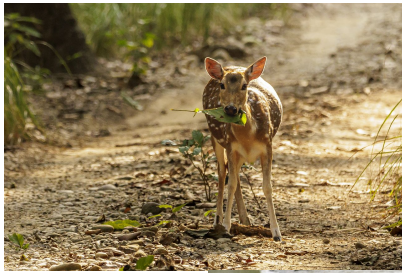


BARDIA NATIONAL PARK



Overview

Bardia National Park Jungle Safari is a wildlife tour package designed by Himalayan Social Journey for nature as well as wildlife lovers. As much as trekking in Nepal gives you the opportunity to explore the traditional side of Nepal, Bardia national park jungle safari lets you indulge in the traditional side of the lowlands of Nepal. The national park was established in 1988 and is one of the largest and undisturbed national parks of Nepal.

The park is home to Bengal Tiger, wild elephant, great one horn Rhinoceros, swamp deer, and blackbuck. More than 30 different mammals, over 863 species of flora, over 230 species of birds, and several species of snakes, lizards, and fish have been recorded in the park, grassland, and river. Therefore, Bardia National Park Jungle Safari is both a thrilling and relaxing trip to explore the wild vegetation of Nepal.

This park is famous for elephant safari, jungle safari, and jungle activities. During jungle safari or elephant safari, you will come across small herds of wild elephants and if lucky you will also get a chance to see the Royal Bengal tiger. This tour allows you to get a close view of the natural vegetation of Nepal and explore them through different jungle activities. Also, walk around and chat with locals and get insights on their lifestyles, culture, and tradition. The culture and tradition as well as their customs of the Terai region is in contrast to the hilly and Himalayas of Nepal. Overall, the Bardia National Park Jungle Safari trip is a great way to get an adventurous thrill and at the same time a relaxing trip as you will be in the hands of Mother Nature.

Join Himalayan Social Journey for this amazing, fun trip to Bardia National park and relish the joy of exploring the wildlife and vegetation of Nepal.

Outline Itinerary (4 Days)

Day 1 : Arrival at Bardia National Park

A representative from Himalayan Social Journey will pick you up from the Nepalgunj Airport. Bardia National Park is only 90kilometers and 2 hours drive away from Nepalgunj. After checking at the resort, we take a tour around loacl traditional Tharu village.

Max Altitude Bardia National Park (300m)

Duration Flight (45 mins), Drive (2 hrs)

Overnight Rhino Lodge Bardia

Day 2 : Bardia National Park: jungle safari, cultural exposure

After breakfast we embark deep into the woods on foot. We will be accompanied by a nature guide and porter. The steamy jungles of Bardia is home to a number of wild animals including Asian elephant, one horn rhinoceros, spotted deer, hog deer, barking deer, samber, swamp deer, black buck, wild boar, royal Bengal tiger, leopard, golden jackal, striped hyena and others. There are also towers (Machan) at different places within the jungle where we can wait for unsuspecting wild-lives to pass us by. Our experienced nature guide will help us track the wildlife. After the jungle tour we return back to our resort and enjoy dinner and take part in the traditional Tharu dance.

Max Altitude Bardia National Park (300m)

Duration 4-5 hrs

Overnight Rhino Lodge Bardia

Meal Breakfast included

Day 3 : Bardia National Park: float safari, bird-watching, cultural dance program

After breakfast, we drive for an hour to Chisapani, a village located over the Karnali River. We embark on our wildlife discovery tour on a Safari float which is a pleasant way to experience the rivers and wildlife of western Nepal. We will be accompanied by a trained guide, well suited for maneuvering the river which does not have any rapids. Throughout the journey we get to admire the beautiful sub-tropical landscape along with the plentiful wildlife. Catching glimpses of wild animals quenching their thirst in the vast Karnali River will be an amazing experience! If you must know we would not be the only ones floating in the Karnali River as the river is home to endangered Gharial crocodile, marsh mugger and gangetic dolphins. Furthermore, this trip is also good for bird-watching as there are quite a number of resident and migratory birds in the Bardia National Park. We end the day with another Tharu cultural dance program.

Max Altitude Bardia National Park (300m)

Duration 4-5 hrs

Overnight Bardia National Park.

Meal Breakfast included

Day 4 : Elephant-back Safari, final departure

After breakfast we set forth on an interesting elephant-back safari. Apart from the fun, another benefit of elephant-back safari is that there is a better chance of seeing wild animals, since the wild animals are less scared when you're on the top of their mammoth friend. Moreover, riding the elephant also saves us from any potential attacks by the wild animals. The elephants usually head northwest and we may see deer, langoor monkeys, rhinos and boars. After the safari, a Himalayan Social Joureny representative will drop us off at the Nepalgunj airport.

Max Altitude Kathmandu (1,400 m)



HIMALAYAN
SOCIAL JOURNEY

Meal Breakfast included

Include / Exclude

- Pickups and drops from hotels and airports
- Accommodation in Rhino lodge Bardiya
- All meals in Bardia National Park
- Transportation in a comfortable private vehicle(s)
- English speaking, trained and experienced local guide
- T-shirt and city map
- National park entrance fees
- All jungle activities in Bardia National Park as mentioned in the itinerary
- All government and local taxes
- Nepalese visa fee
- Domestic Flight (KTM-NEPALJUNG) USD 153
- Extra night accommodation if required
- Excess baggage charges
- Personal expenses
- Travel insurance



Himalayan Social Journey

Himalayan Social Journey has come up with exclusive packages based on travelers' budgets in Nepal, India, Tibet, and Bhutan with the slogan, "Ecstasy is within you, safety the first."

Our Contact

House No 244, Buddha Tole Marg, Kumari Club, Shorakhutte

reservation@hsj.com.np

+977-01-4952211, +977-9865452271 (Whats app)